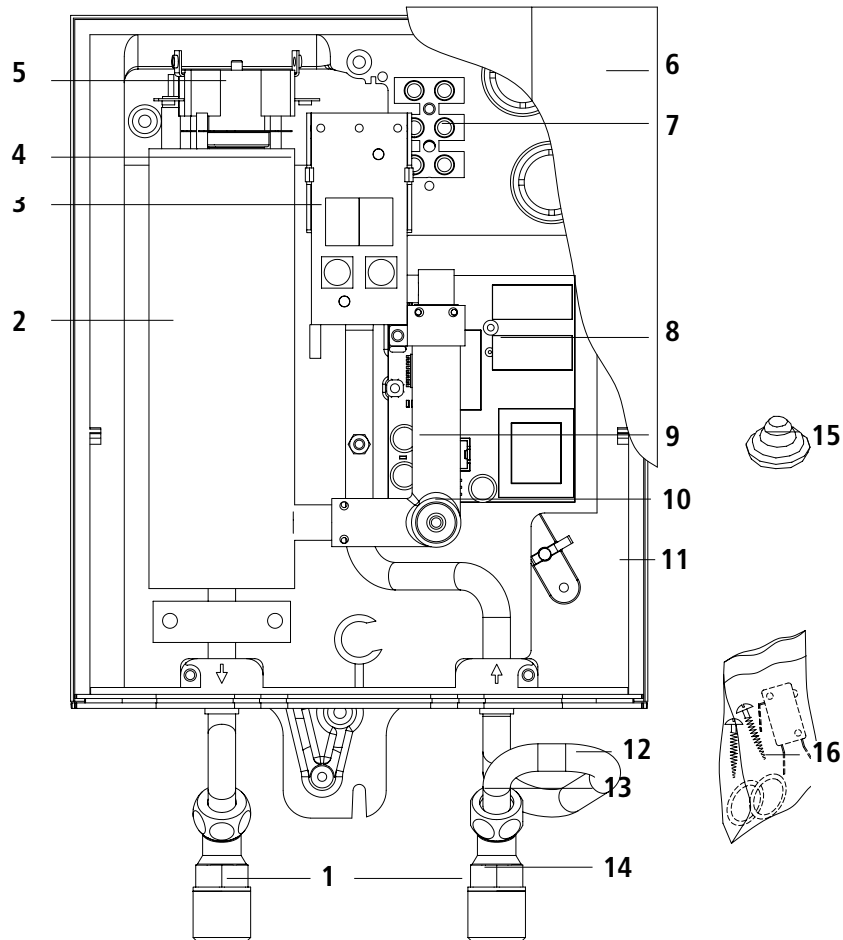


Instantaneous water heaters CRX 6...9 (after August 2005)



Pos.	Art.-No.	Description	Euro*	Pos.	Art.-No.	Description	Euro*
1	86025	Connection set CRX 6 with swivel nipple 2002, flow limiter, backflow preventer and fine filter	15.00	9	86270	CLAVISION flow sensor	23.00
	86026	Connection set CRX 7 with swivel nipple 2002, flow limiter, backflow preventer and fine filter	15.00	10	86072	Temperature sensor 2000	14.50
	86027	Connection set CRX 9 with swivel nipple 2002, flow limiter, backflow preventer and fine filter	15.00	11	86050	Bottom part	16.00
2	86856	CRX 6 tubular heating element 6.6 kW/230 V	41.00	12	86283	CRX cold water inlet 2005	16.00
	86807	CRX 7 tubular heating element 7.2 kW/220 V	46.00	13	81075	Flow limiter 5 l/min CRX 9	3.00
	86809	CRX 9 tubular heating element 8.8 kW/230 V	46.00		81074	Flow limiter 4 l/min CRX 7	3.00
3	86240	CX control panel	24.00		89106	Flow limiter 3.5 l/min CRX 6	3.00
4	86060	Part/lamp holder	5.00	14	80080	Fine filter	3.00
5	86820	Safety thermal cut-out with heat conductor paste	12.00	15	82180	Grommet	2.00
6	86312	Front cover	15.00	16	86792	Small spare parts with seals, screws, filter, valve and convolution	12.00
7	86255	Connection terminal	4.00				
8	86836	CRX 6 electronic board with heat conductor paste	54.00	not shown:			
	86850	CRX 7 electronic board with heat conductor paste	54.00	17	86999	Heat conductor paste	3.60
	86839	CRX 9 electronic board with heat conductor paste	54.00				

Parts in **bold type** are key components for servicing purposes.

When ordering, please always specify the appliance model and serial number from the rating plate. Further spare parts on request.

CLAGE GmbH
 Pirolweg 1-5, 21337 Lüneburg
 P.O. Box 1680, 21306 Lüneburg
 Fon: +49 (0)4131-8901-38
 Fax: +49 (0)4131-83200

Service:
 Fon: +49 (0)4131-8901-40
 Fax: +49 (0)4131-8901-41
 E-mail: service@clage.de
 Internet: www.clage.com