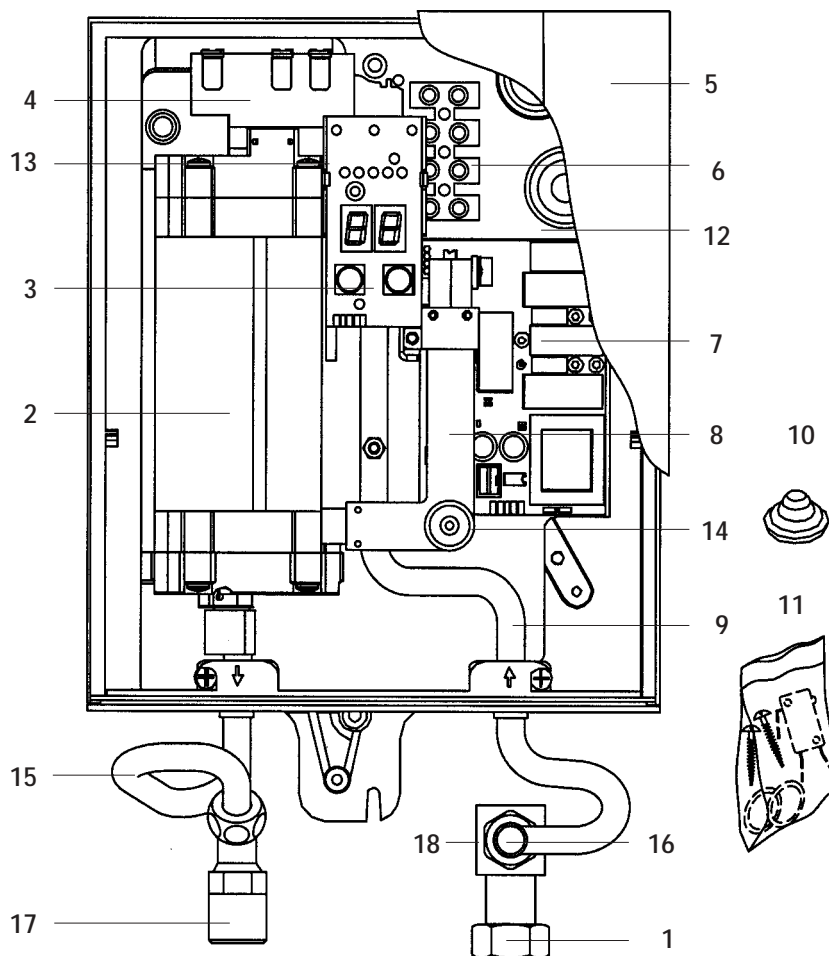


Spare Part Price List CBX 11 / CBX 13 (after October 2002)

Instant multipoint water heater, electronically controlled, oversink installation



Pos.	Art.-No.	Description	EUR*	Pos.	Art.-No.	Description	EUR*
1	86285	Cold water connecting piece	7.00	12	86050	Bottom part	16.00
2	86233	CBX 11 heating cartridge 11 kW / 400 V	60.00	13	86060	Part/lamp holder	5.00
	86230	CBX 13 heating cartridge 13,5 kW / 400 V	60.00	14	86072	Temperature sensor 2000	14.50
3	86240	CX panel	24.00	15	86300	Hot water outlet	19.00
4	81320	Safety thermal cut-out	35.00	16	81076	Flow limiter 6l/min	3.00
5	86312	CBX 2002 front cover	15.00	17	86287	Swivel nipple 2002	5.00
6	86250	Connection terminal CBX/CRX	4.00	18	82162	Fine filter	5.00
7	86261	CBX 11 electronic board with heat conductor paste	90.00		not shown:		
	86260	CBX 13 electronic board with heat conductor paste	90.00	19	86023	Connection set with seals, dowels, screws, swivel nipple, cable seal and cold water connecting piece	13.00
8	86270	CLAVISION flow sensor	23.00				
9	86282	Cold water inlet 2002	16.00				
10	82180	Cable seal	2.00				
11	86292	Set of small spare parts 2002 with seals, screws filter and flow limiter	12.00				

When ordering, please always specify the appliance model and serial number from the rating plate. Further spare parts on request.

*Euro gross prices excl. VAT. Subject to change without notice. GP 8/03

CLAGE GmbH
 Pirolweg 1-5, D-21337 Lüneburg
 P.O. Box 1680, D-21306 Lüneburg
 Fon: +49 (0)41 31 89 01-38, -39
 Fax: +49 (0)41 31 83200
 E-mail: export@clage.de

Service:
 Fon: +49 (0)41 31 89 01-40
 Fax: +49 (0)41 31 89 01-41
 E-mail: service@clage.de
 Internet: www.clage.de