

# E-mini instant water heater MCX BLUE



## Application areas

Single point supply:

- > Washbasin
- > Sanitary facilities in commercial buildings



# E-mini instant water heater

## MCX BLUE

### Product information



Energy efficiency class <b>A</b> (Scale: A+ to F)	MCX BLUE
Part number:	1500-15133
Type:	closed-outlet (with open-outlet tap)
Maximum operating pressure [MPa (bar)]:	1 (10)
Water connections (thread connections):	G $\frac{3}{8}$ "
User set temperature [°C]:	35 – 38 – 45
Hot water output at $\Delta t = 25\text{K}^1$ [l/min]:	2.0
Switch-on flow rate / max. flow rate <sup>2)</sup> [l/min]:	1.2 / 1.9
Nominal power rating [kW]:	3.5
Supply voltage:	1~ / N / PE 220 – 240V AC
Nominal current [A]:	15
Required cable diameter [mm <sup>2</sup> ]:	1.5
Bare wire heating system IES®:	✓
Ready for Smart Control:	✓   (optional)
Ready for FX wireless remote control:	✓  (optional)
Solar-compatible, suitable for reheating (inlet temperature $\leq 70\text{°C}$ ):	✓
VDE approved / Protection class:	✓ / IP 25
Specific water resistance at 15 °C [ $\Omega\text{cm}$ ] $\geq$ :	1100
Nominal volume [litres]:	0.2
Weight filled with water [kg]:	approx. 1.5
Dimensions (height × width × depth) [cm]:	13.5 × 18.6 × 8.7

1) Temperature increase e.g. from 15 °C to 40 °C 2) Limited flow amount for optimal temperature increase

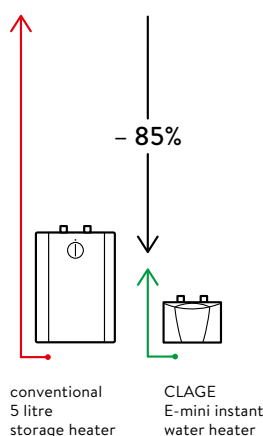
#### Description

- > Electronically controlled instant water heater with innovative single-lever mixing tap for energy-efficient hand-washing
- > Intuitive operation with perfect water temperature at the middle position of the control lever
- > Saves water because of intelligent flow technology and very short water supply lines
- > Meets the highest requirements for drinking water hygiene by separating water lines from the tap body as well as nickel- and lead-free materials
- > Touch button at the instant water heater to set the outlet temperature to 35 °C, 38 °C or max. 45 °C
- > Very fast and simple system installation
- > Open-outlet tap with special aerator, easy-fix mounting system and pull-up drain stopper
- > The efficient bare wire heating system IES® with replaceable heating cartridge provides an extended service life and easy maintenance
- > Can also be controlled via tablet or smartphone (iOS 9\* or higher / Android-OS 4.4 or higher, FXE3 wireless adapter and the »Smart Control« app required)

#### Profitability comparison (Source: www.clage.com)

##### Saves up to 85 % energy compared to conventional small storage heaters.

The E-mini instant water heater is convincing due to its small size and economical operation. The water is heated directly as it flows through the unit. Hot water is not stored in a tank, which saves standby energy that would be otherwise required. The comparison clearly shows the annual savings potential of the instantaneous water heater, as the heat losses of a storage tank can be higher than the useful energy required for washing hands.



# E-mini instant water heater

## MCX BLUE

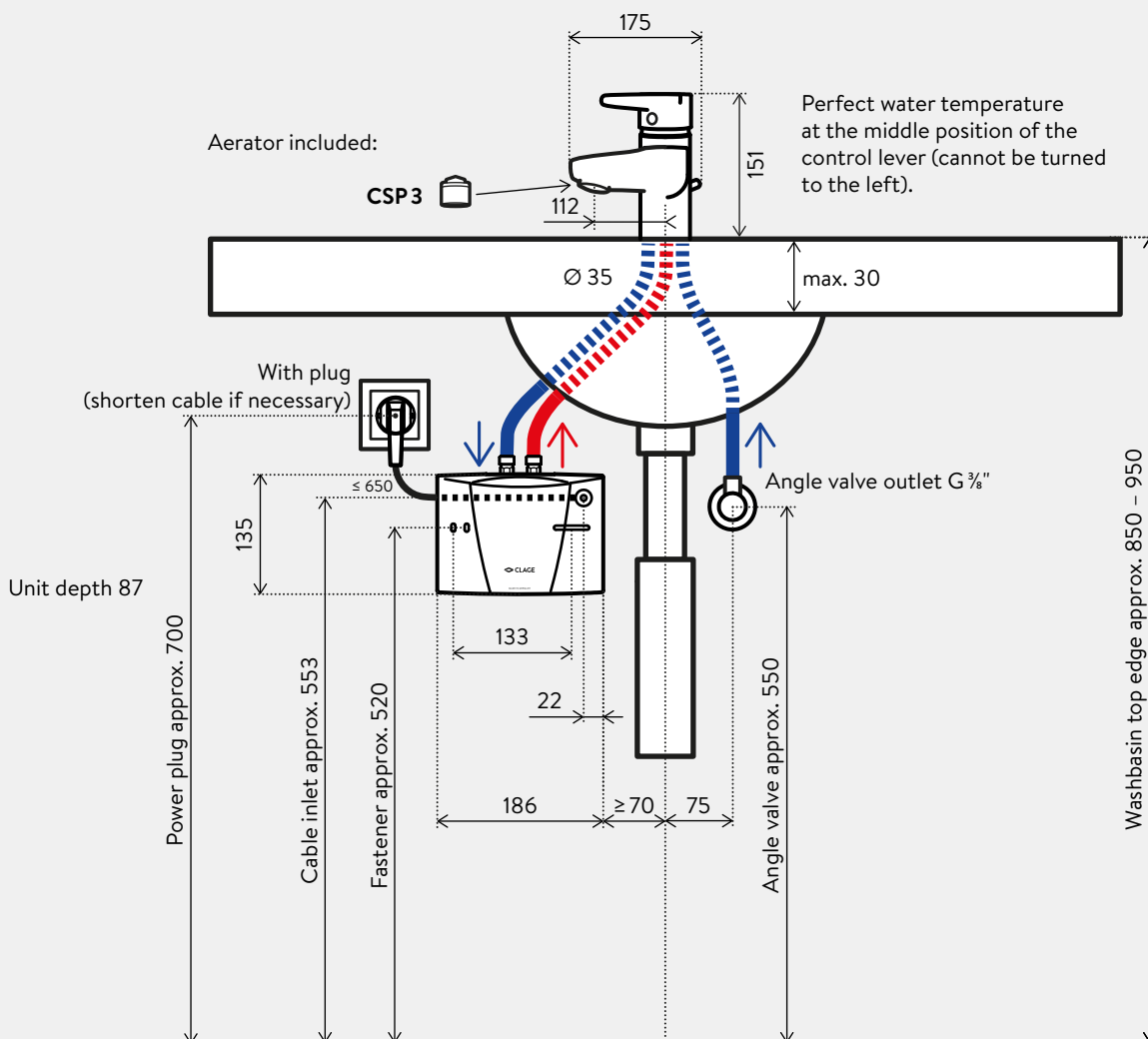
### Installation



Example of an **open-outlet** installation

Measurements in mm

Assembly and operating instructions must be observed upon installation.

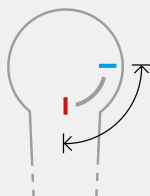


#### Innovative tap technology



Optimised and isolated water lines, 80% less standing water volume in the tap body compared to conventional single-lever mixer taps

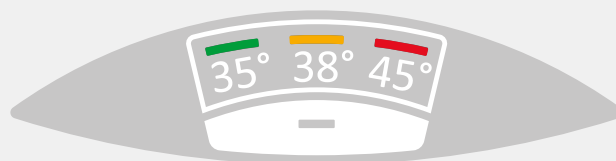
#### Perfect hand-wash temperature in the middle



The optimal lever position for energy-efficient warm water is in the middle and allows an intuitive correct operation.

#### Touch-button control panel

The control panel with the sensor button and three colour LEDs is used to set the outlet water temperature to 35°C, 38°C or 45°C.





**Aerator CSP 3** (included)

The aerator at the tap supports the energy- and water-saving operation of the compact instant water heater. The new special CSP aerators mix air into the water and thus create a uniform water stream that does not splatter but softly cascades down.

Aerator insert for tap adapter M 22/24 at the tap

**CSP 3 (< 2 l / min):** Part no. 0010-00421



**FXS 3 (D, M) remote control set** (optional)

FX 3 remote control including Bluetooth® remote control adapter FXE 3 for integration into the instantaneous water heater as a set. In addition to the operation at the device, the remote control allows the comfortable temperature adjustment of the instantaneous water heater over a distance of approx. 10 metres in the building. Secure Bluetooth® radio transmission, stepless temperature selection via two buttons, two fixed value buttons and an LCD display, magnetic wall bracket and batteries (included in delivery). IP 20. Dimensions (H × B × T): 5.8 × 12.5 × 1.9 cm

**FXS 3 (D, M):** Part no. 3200-34020



**FXE 3 (D, M) remote control adapter** (optional)

Bluetooth® remote control adapter for integration into the instantaneous water heater to connect the water heater to a smartphone / tablet or the FX 3 remote control. This adapter is required if the appliances are not yet equipped with an FX 3 remote control.

**FXE 3 (D, M):** Part no. 3200-34022



Apple



Android